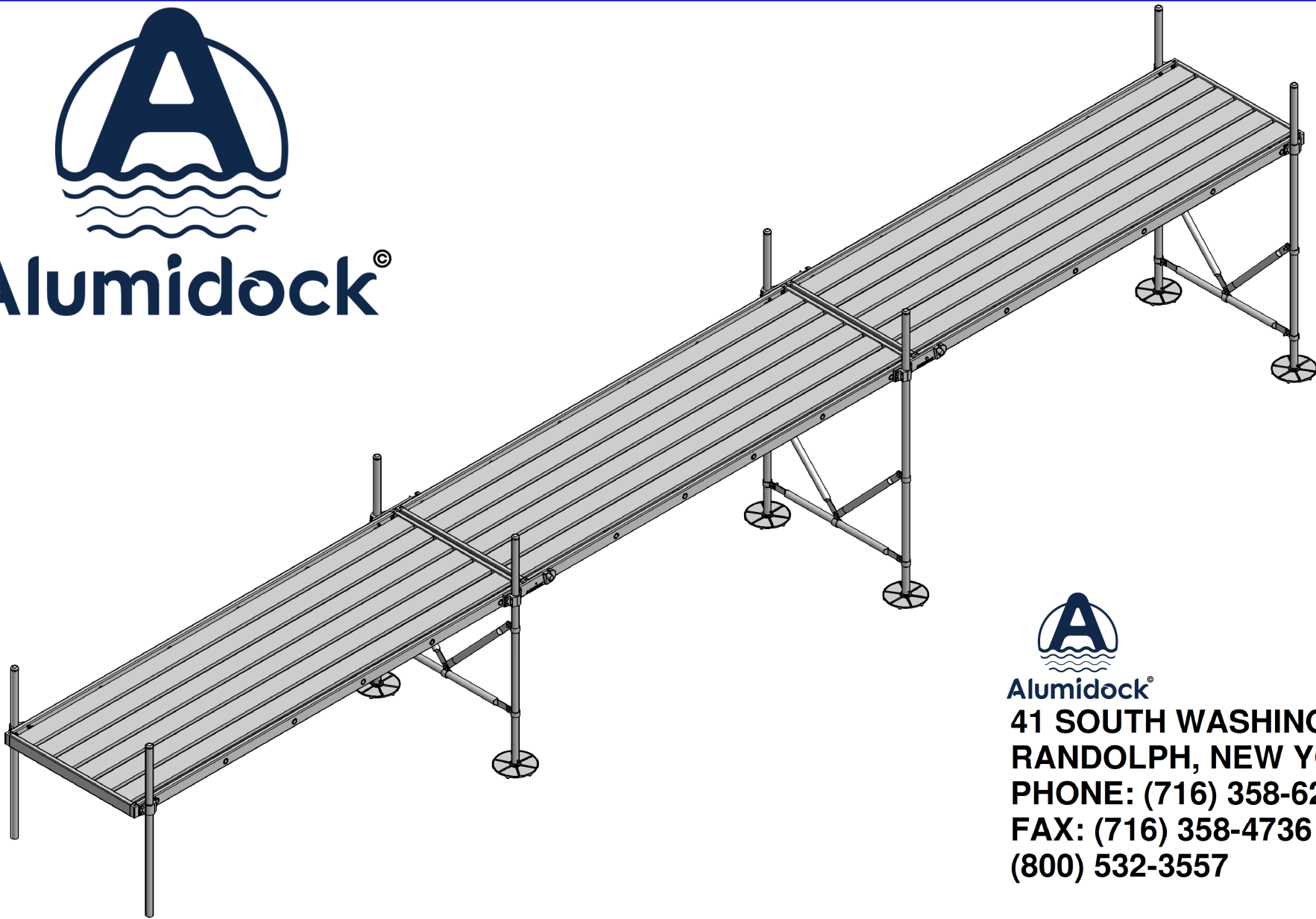


LEG DOCK ASSEMBLY



Alumidock®



Alumidock®

**41 SOUTH WASHINGTON ST.
RANDOLPH, NEW YORK 14772**

PHONE: (716) 358-6201

FAX: (716) 358-4736

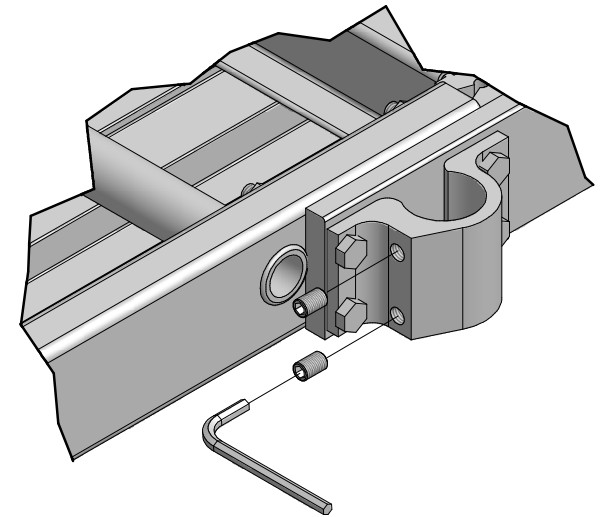
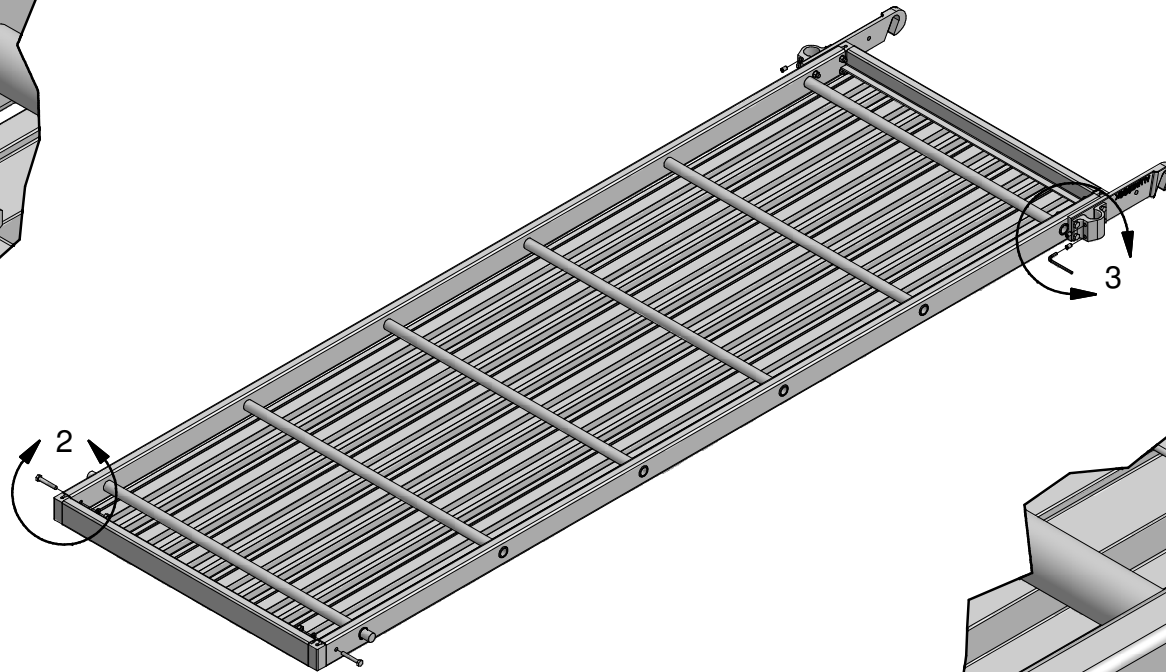
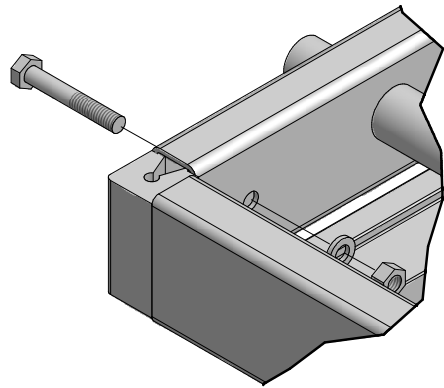
(800) 532-3557

LEG DOCK ASSEMBLY

TOOLS REQUIRED for ASSEMBLY

**3/8" DRIVE RACHET
1/2" WRENCH and SOCKET
PLIERS or VISE GRIPS
STANDARD SCREWDRIVER
HAMMER
SMALL LEVEL**

1) PLACE ALL SECTIONS AS SHOWN



2) REMOVE ALL LOCKING BOLTS

(TWO 1/2" WRENCHES ARE REQUIRED IN THIS STEP)

(PLACE BOLTS, NUTS, AND WASHERS IN A CONTAINER FOR LATER USE)

HELPFUL HINT: THE USE OF A 3/8" DRIVE RATCHET WILL SPEED UP THIS PROCESS.



5/16" x 2" LOCKING BOLT



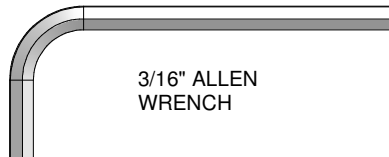
5/16" LOCK WASHER



3/8" x 1/2" SET SCREW



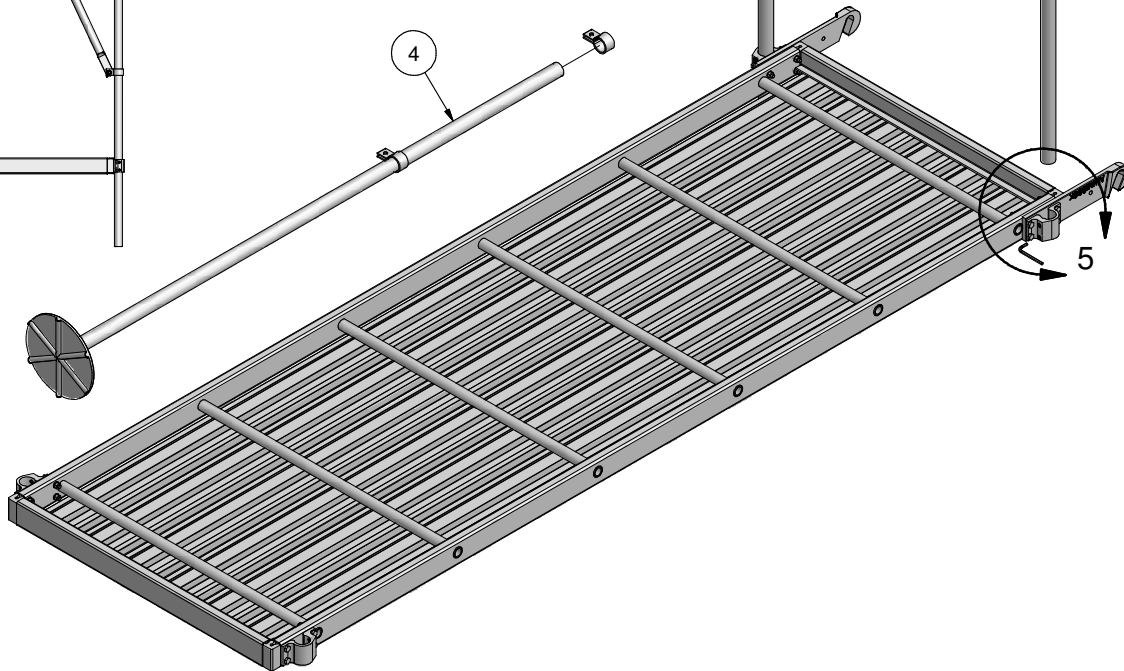
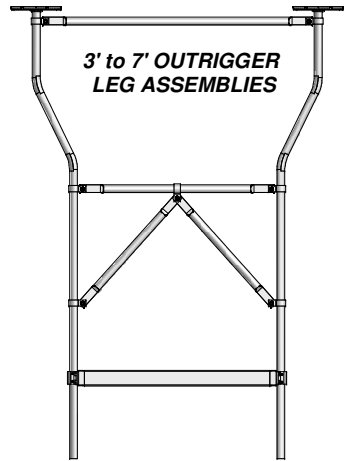
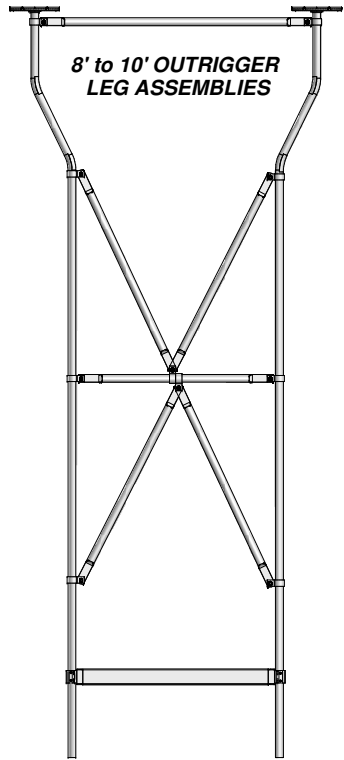
5/16" HEX NUT



3/16" ALLEN
WRENCH

3) INSTALL ALL SET SCREWS

(SET SCREWS MUST NOT PROTRUDE INSIDE OF SOCKET.)



4) SLIDE CLIPS ONTO LEGS

STRAIGHT LEG: 3' TO 7' - TWO CLIPS PER LEG
8' TO 10' - THREE CLIPS PER LEG

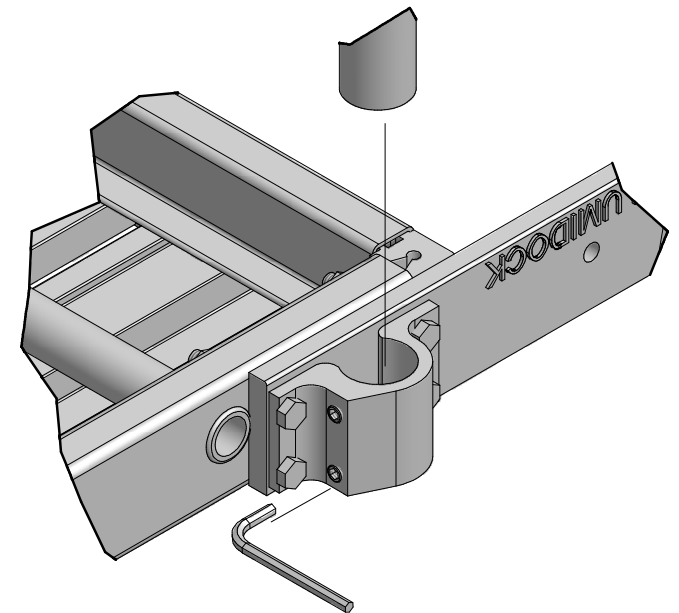
OUTRIGGER LEG: 3' TO 7' - 3 CLIPS PER LEG
8' TO 10' - 4 CLIPS PER LEG
(SEE DETAILS AT LEFT)

5) INSERT LEGS INTO SOCKETS

(BETWEEN 1 TO 2 FEET OF LEG SHOULD BE ABOVE THE SURFACE OF THE DOCK.)

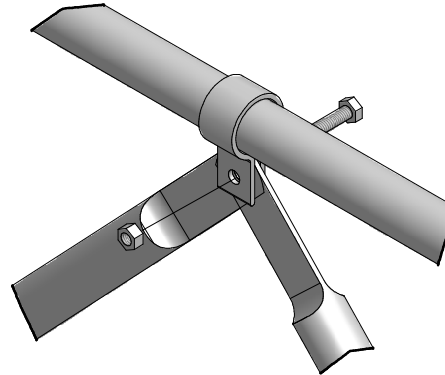
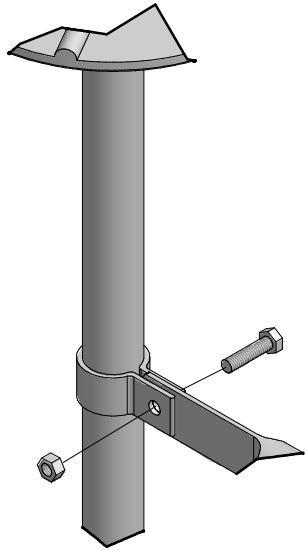
6) TIGHTEN 1 SET SCREW PER LEG

NOTE: ALL SET SCREWS WILL BE TIGHTEND IN A LATER STEP.



LEG TRUSS ASSEMBLY

(TWO 1/2" WRENCHES ARE REQUIRED IN THIS STEP)



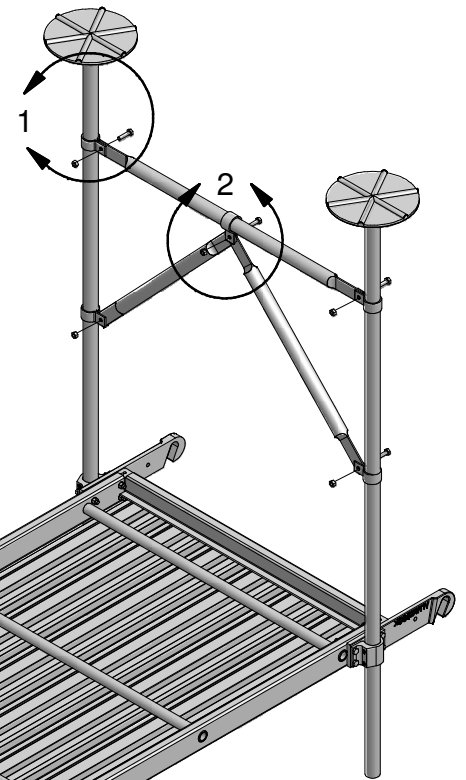
2) DIAGONAL TRUSS

(ATTACH TWO DIAGONALS TO ONE CLIP, FINGER TIGHT)

1) HORIZONTAL TRUSS

(ATTACH BOTH ENDS TO LEGS AS SHOWN , APPROX. 6 TO 12" FROM BOTTOM PAD, AND TIGHTEN.)

HELPFUL HINT: SQUEEZE DIAGONAL CLIPS TOGETHER WITH PLIERS OR CHANNEL LOCKS AND FINGER TIGHTEN NUTS, THEN FINISH WITH WRENCHES.



5/16" HEX NUT



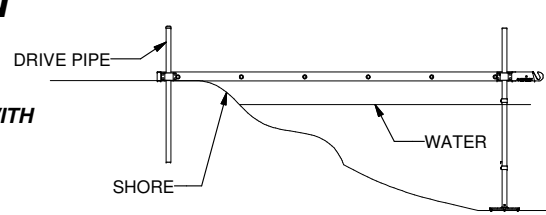
5/16" x 1 1/4" BOLT

STARTER SECTION INSTALLATION

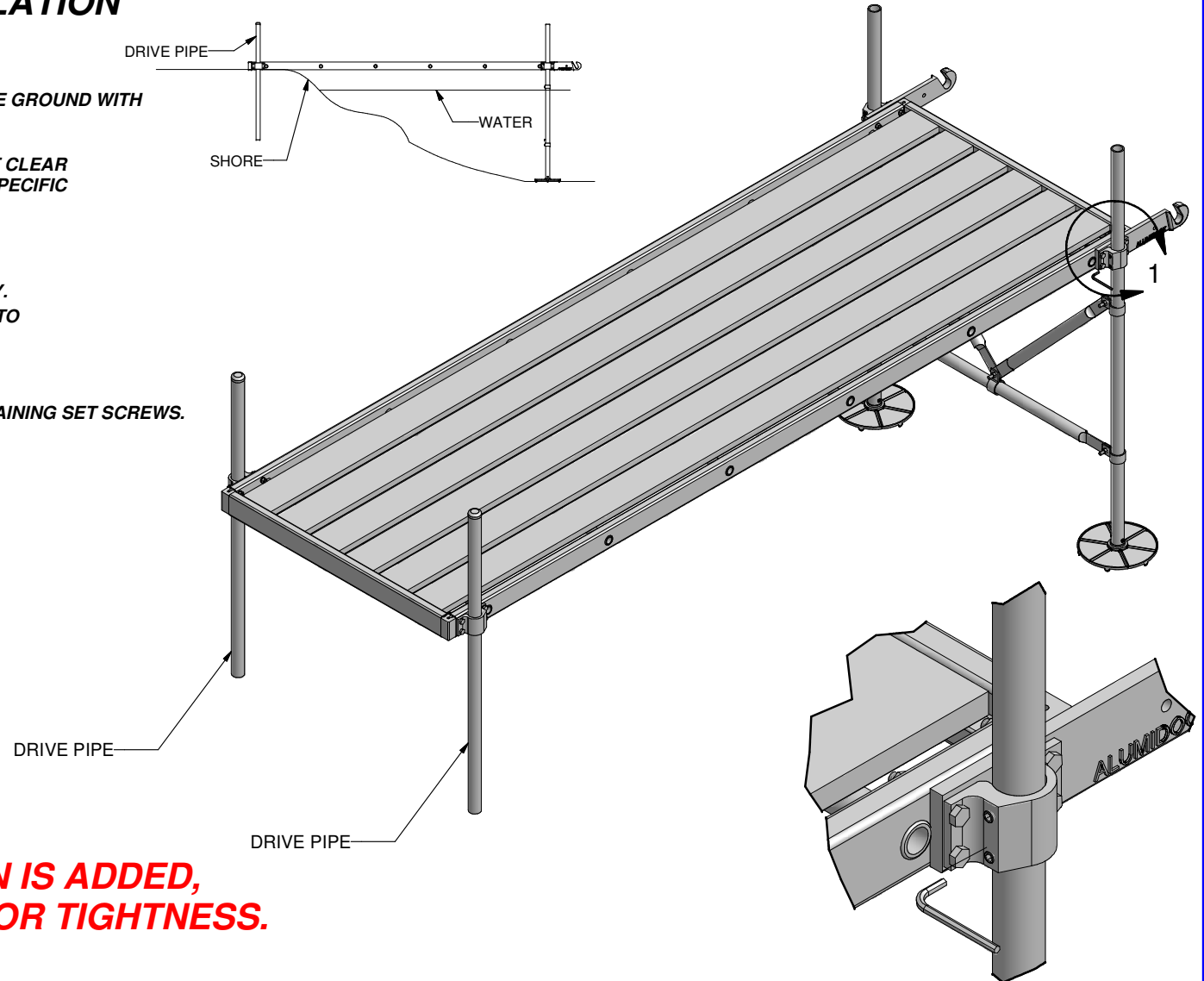
(A 3/16" ALLEN WRENCH AND A LEVEL ARE REQUIRED)

NOTE: STARTER SECTION SHOULD BE ON STABLE GROUND WITH DRIVE PIPE DRIVEN SECURLY INTO GROUND.

SECTIONS SHOULD BE LEVELED TO CREATE SUFFICIENT CLEAR SPACE BETWEEN DECK AND WATER BASED ON YOUR SPECIFIC LAKE CONDITIONS (WAVE ACTIVITY.)



- 1) LOOSEN SET SCREWS TIGHTEND PREVIOUSLY. USING THE LEVEL, SLOWLY MOVE SECTION INTO PLACE AND RETIGHTEN.
- 2) LEVEL ACROSS THE END, SET & TIGHTEN REMAINING SET SCREWS.
- 3) REPEAT PROCESS FOR REMAINING SECTIONS.



**BEFORE THE NEXT SECTION IS ADDED,
CHECK ALL SET SCREWS FOR TIGHTNESS.**

ADDITIONAL SECTION INSTALLATION

**NOTE : BEFORE THIS STEP IS ATTEMPTED
CHECK TO INSURE THAT ALL
LOCKING BOLTS HAVE BEEN REMOVED.**

1) SET PIVOT PIN INTO HINGE BAR SLOT.

2) LOWER SECTION TOWARDS WATER.

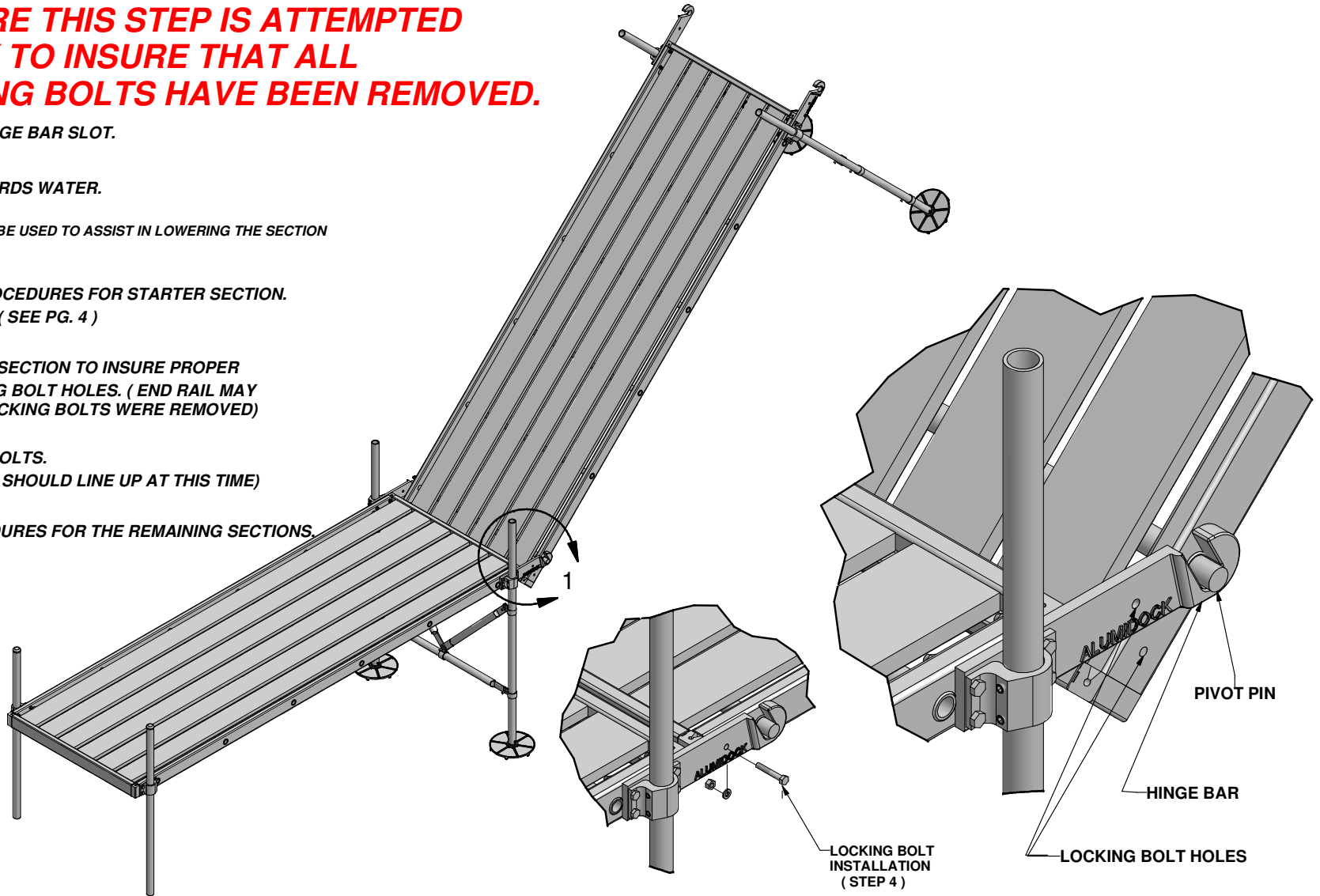
HELPFUL HINT: A ROPE MAY BE USED TO ASSIST IN LOWERING THE SECTION INTO POSITION.

**3) FOLLOW LEVELING PROCEDURES FOR STARTER SECTION.
(SEE PG. 4)**

**4) POSITION END RAIL OF SECTION TO INSURE PROPER
ALIGNMENT OF LOCKING BOLT HOLES. (END RAIL MAY
HAVE MOVED WHILE LOCKING BOLTS WERE REMOVED)**

**5) RE-INSTALL LOCKING BOLTS.
(LOCKING BOLT HOLES SHOULD LINE UP AT THIS TIME)**

6) REPEAT THESE PROCEDURES FOR THE REMAINING SECTIONS.

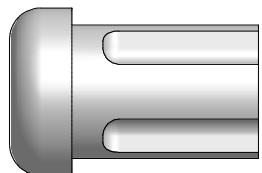
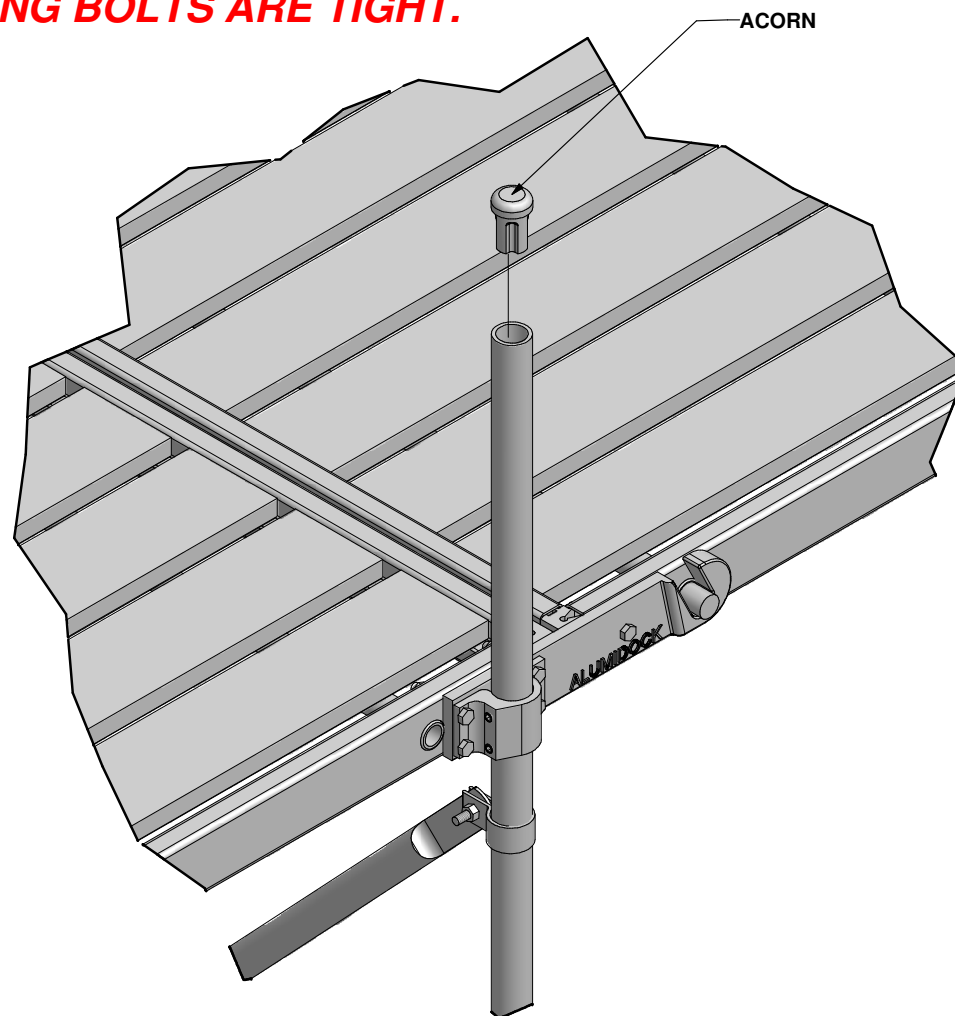


ONCE ALL SECTIONS ARE INSTALLED

1) CHECK THAT ALL SET SCREWS & LOCKING BOLTS ARE TIGHT.

2) CUT LEG PIPE TO A UNIFORM HEIGHT ABOVE DOCK.

**3) ADD ACORN PIPE CAPS
(SECURE BY HITTING WITH A HAMMER)**

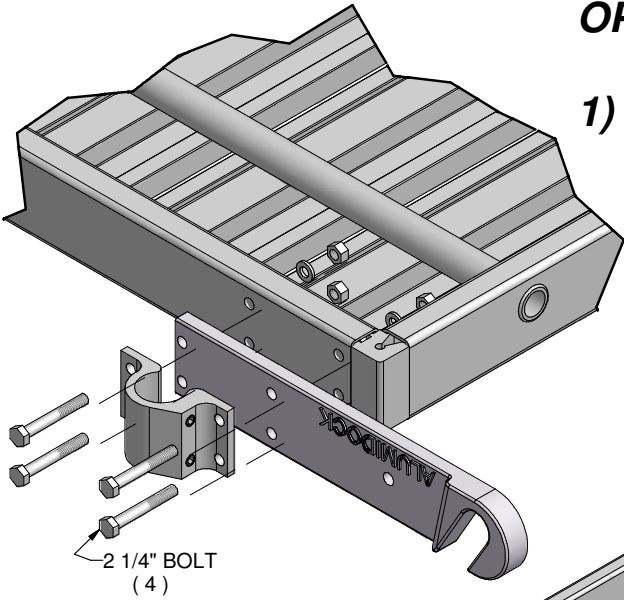


ACORN

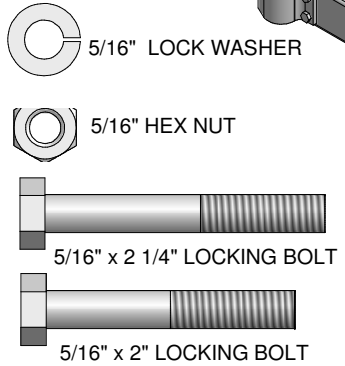
OPTIONAL END PLATFORM INSTALLATION

(TWO 1/2" WRENCHES ARE REQUIRED)

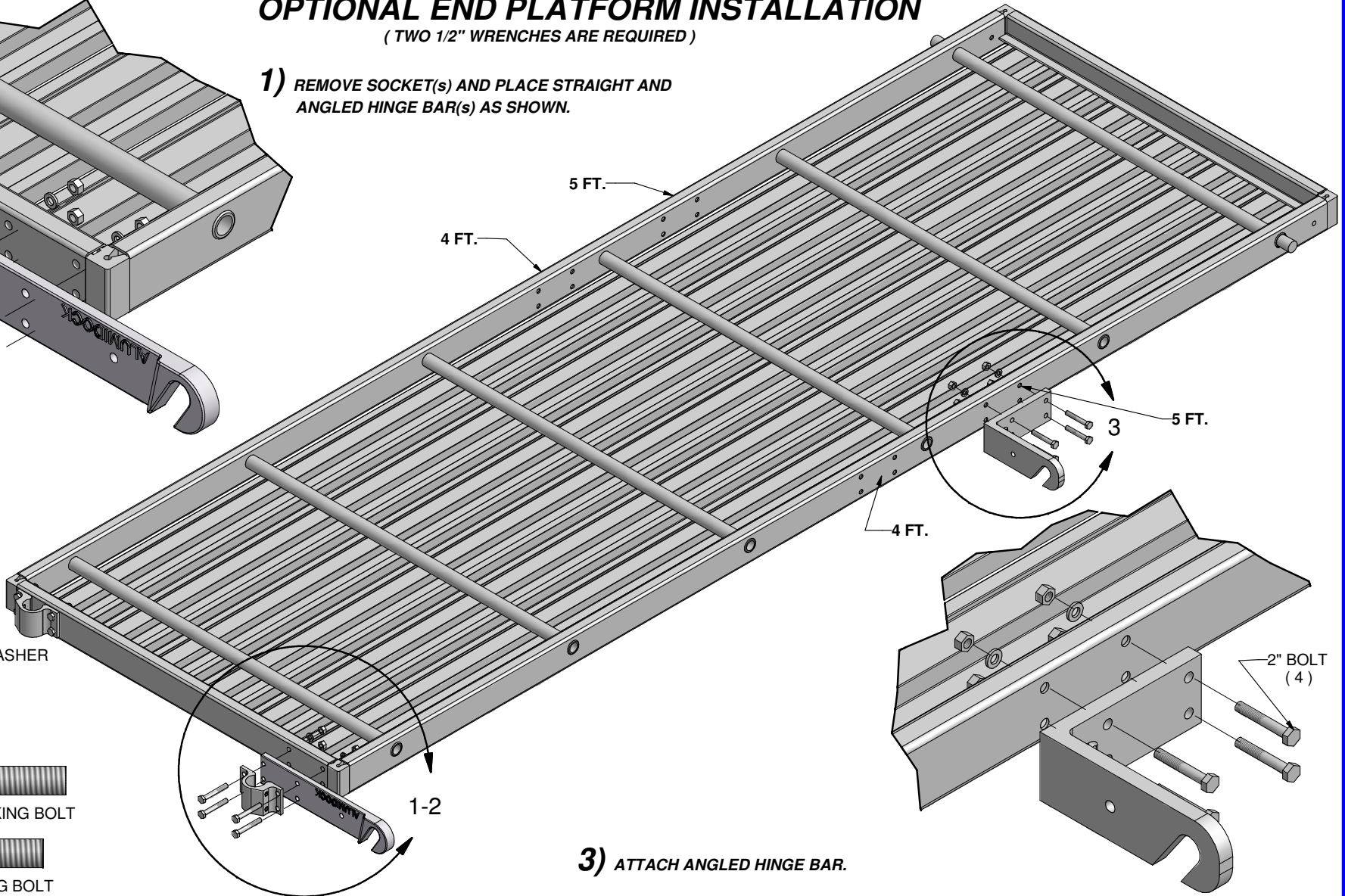
1) REMOVE SOCKET(S) AND PLACE STRAIGHT AND ANGLED HINGE BAR(S) AS SHOWN.



2) RE-ATTACH



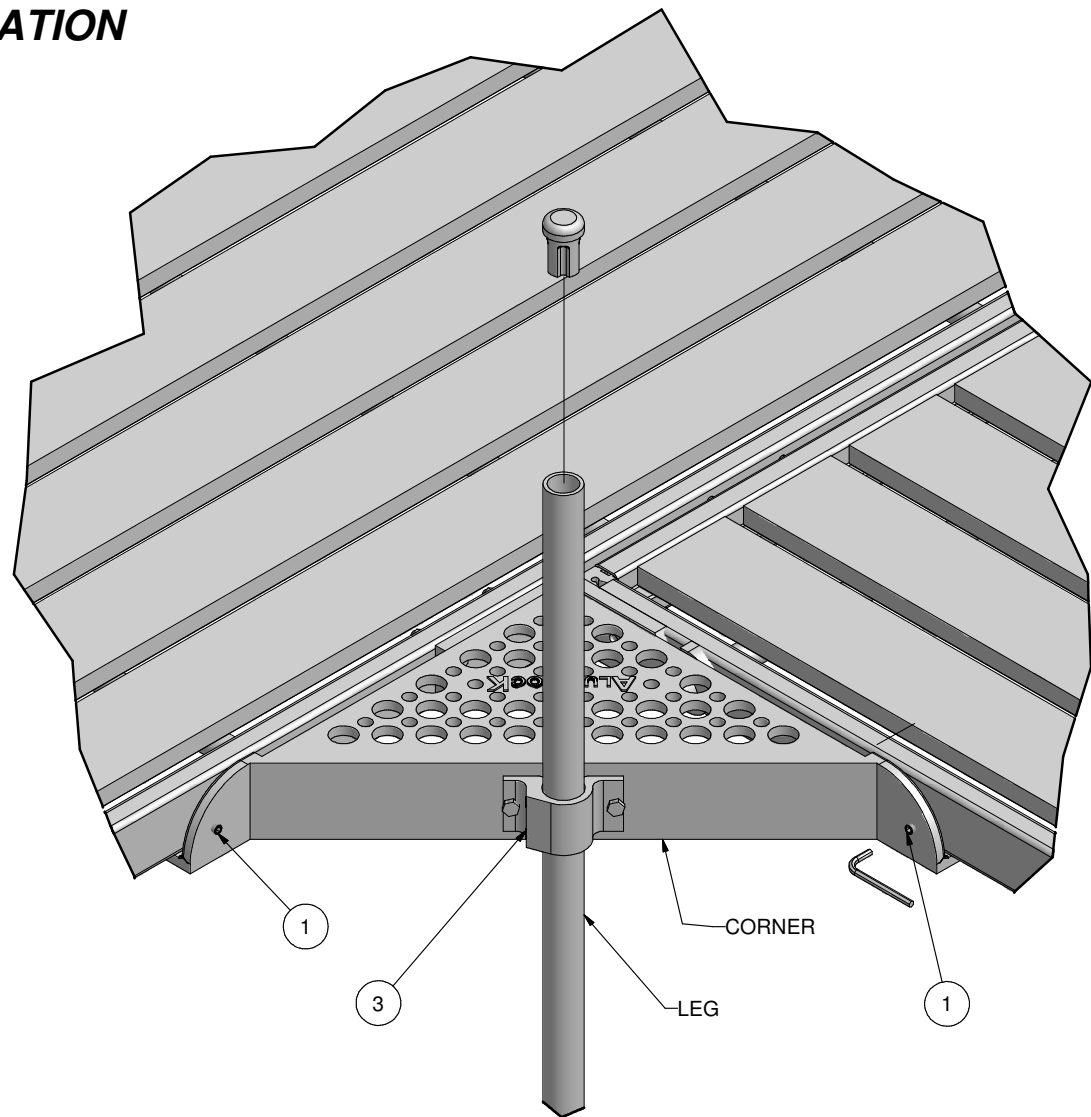
3) ATTACH ANGLED HINGE BAR.



OPTIONAL DOCK CORNER INSTALLATION

(BE SURE THAT ALL SET SCREWS HAVE BEEN INSTALLED)

- 1) TIGHTEN OUTSIDE SET SCREWS.
- 2) LOWER LEG WITH PAD TO BOTTOM.
- 3) TIGHTEN SOCKET SET SCREWS.
- 4) ADD ACORN PIPE CAP.
(SECURE BY HITTING WITH A HAMMER)



OPTIONAL ALUMIDOCK ACCESSORIES

ALUMIDOCK/ALUMIFLOAT BENCH
ADJUSTABLE STRAIGHT LADDERS
MOORING CLEATS
BOATFENDERS



Alumidock®